

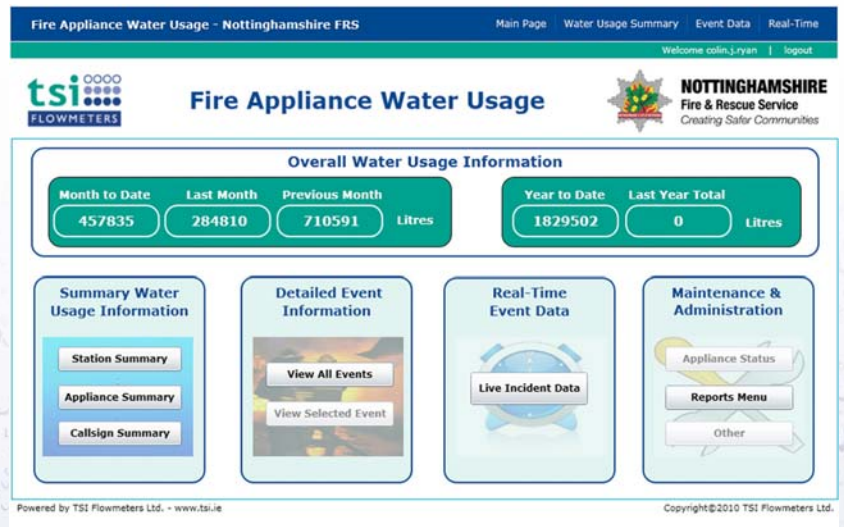
## "Water Smart" Information System - WSIS 2000 Recording and Reporting of Fire Water Usage The Ultimate Solution to Water Management, Safety and Environmental issues

Fitting TSI Flowmeters to fire appliances throughout the UK has significantly improved the efficiency of use of the No.1 fire fighting resource - water.

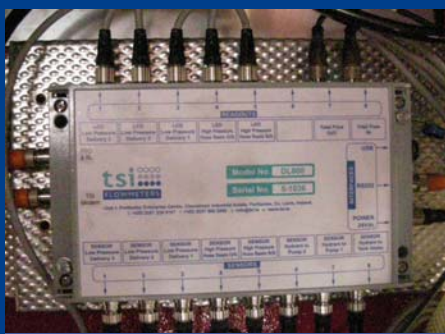
Innovative Fire & Rescue Services throughout the UK are using TSI Flowmeters ground-breaking technology to help monitor and control their water usage, reduce their carbon footprint and improve the working environment of their fire fighters as well as reduce costs.

The WSIS 2000 provides:

- Monthly Water Usage Report
- Summary Reports by Month, Appliance, Station, etc.
- Summary Report of Large Incidents
- Detailed Incident Water Usage Information
- Live Incident Data Viewer



- Water Usage Reports
- Improve Environmental Outcomes
- Improve Firefighters Safety
- Complete Incident Water Usage Information
- On-Appliance Water Availability & Usage Information
- Web-Based Water Usage Access
- Real-time Delivery of Water Usage Information to ICU
- Custom Reporting and link to other Data



DL800 Data Logger Installed Behind Pump Panel



Total In Total Out



Flowmeters in Pump Bay of Nottingham Fire & Rescue Service Appliance

24 Rockdale, Mountrath Road, Portlaoise, Co. Laois, Ireland

t: +353 (0)87 235 2107 | f: +353 (0)57 866 3852 | e: info@tsi.ie

www.tsi.ie

## BENEFITS

- Improved Efficiency
- Improved Safety
- Improved Environmental Outcomes
- Reduce Carbon Footprint
- Complete Incident Water Usage Data
- Environmental Impact Reporting
- Help with Prediction of Water run-off
- Real-time Incident Management Information

## Pump Bay Water Flow Information

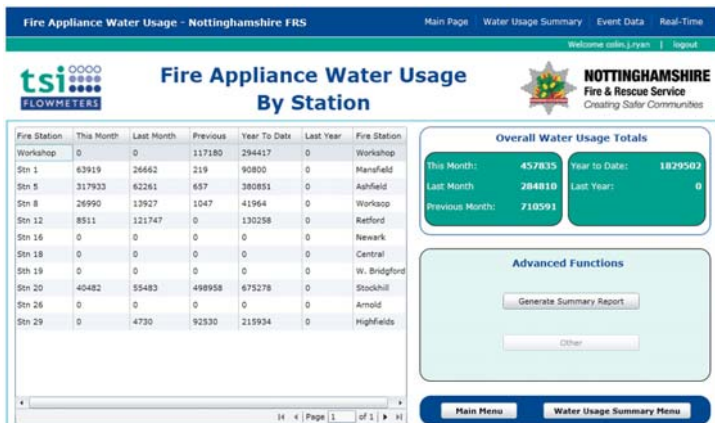
Individual flow readouts, are provided to enable the pump operator to control each outlet.

Total Flow In and Total Flow Out are shown on gauges in the pump bay, enabling the pump operator to balance total flow out against incoming supply.

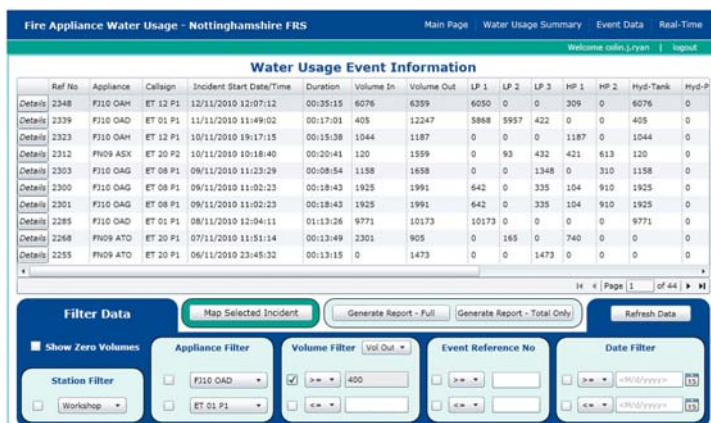


East Sussex Fire and Rescue Service Pump Bay

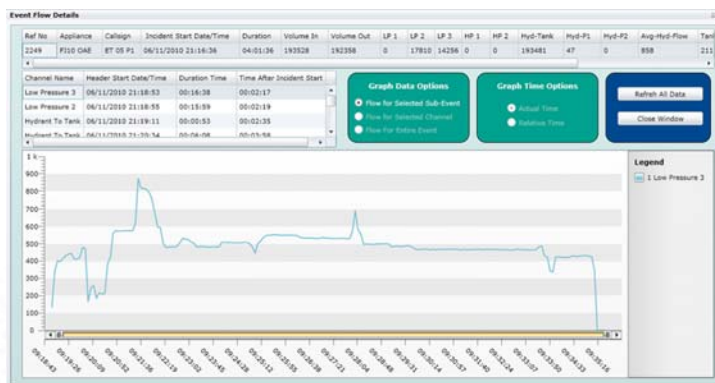
## Powerful Web Based Water Usage Data Access & Reporting. Providing Summary Reports & Detailed Information



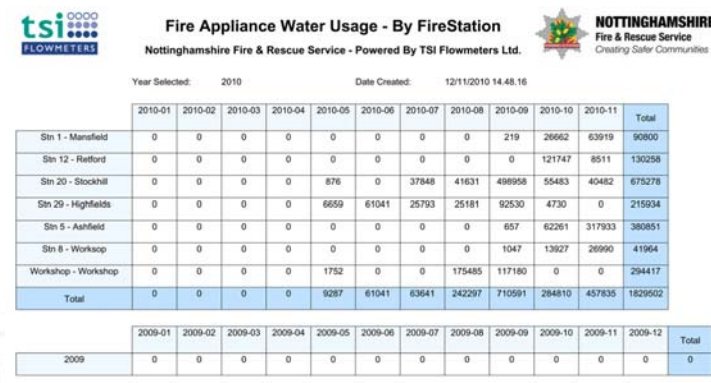
Summary of Water Usage By Fire Station



Summary Incident Information



Detailed Incident Information



Summary Report of Water Usage (exported in PDF or Excel format)

## Water Flow Data Recording & Reporting

### Data Logger DL600 Art No 033-020

- Dimensions: 340(L) x 155 (W) x 60 (H) mm
- Power: Appliance Battery (12 - 32Vdc) - 200mA
- Protection: IP65

### LED Readout Art No 033-030

- Power: Appliance Battery (12 - 32Vdc) - 60mA
- Protection: IP65

### GPRS modem with GPS Art No 033-040

- Power: Appliance Battery (12 - 32Vdc) - 80mA - 220mA typical (Peak 1A)
- Protection: IP65 enclosure

### Database & Reporting Software Art No 033-110

- Powerful Web Based Data Access & Reporting

## System Overview

